

IOWA STROKE REGISTRY

Status Report



August, 2015

ISR Status

- 35 hospitals with Data Use Agreements through June 30, 2015
 - Allows collection of data for QI
 - Data without identifiers to IDPH, CDC
- Current status
 - ISR direct online data collection - 10
 - GWTG download - 6
 - UnityPoint download - 8
 - Allegiant – Midas download - 1

Database Changes

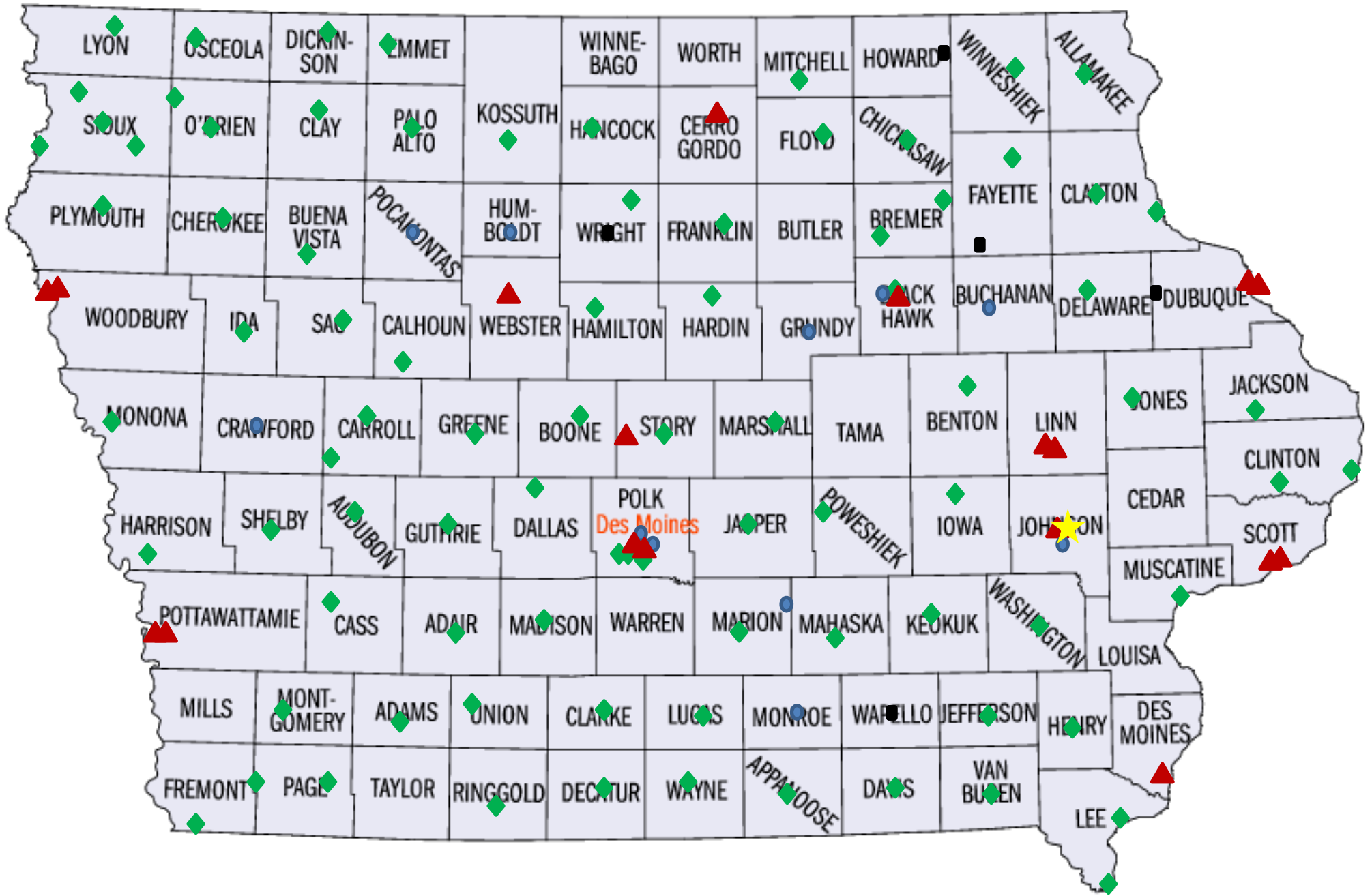
FORM CHANGES – AUGUST 2015

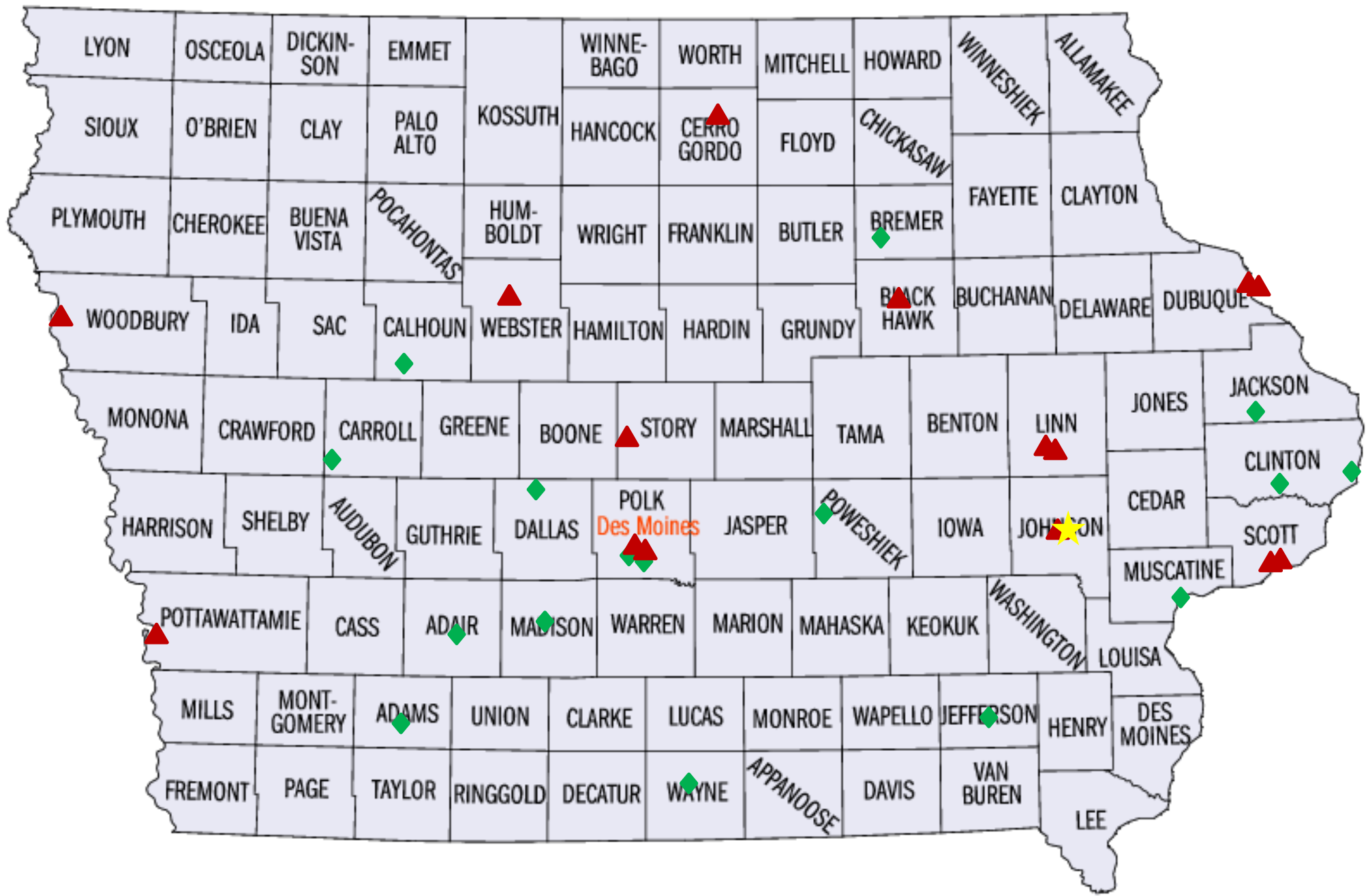
Arrival

- Add new choice of 'NA (inpatient stroke)' to question 'How did the patient get to your hospital for treatment of their stroke?'
- Add new choice of 'NA (inpatient stroke)' to question 'Where did the patient first receive care at your hospital?'
- Add new choice of 'NA (inpatient stroke)' to question 'Patient was transferred from your ED to another acute care hospital without being admitted to your hospital'

Thrombolytic Treatment

- Add 'Is there documentation on the day of or day after hospital arrival of a reason for extending the initiation of IV thrombolytic to 3 to 4.5 hours of Time Last Known Well?'

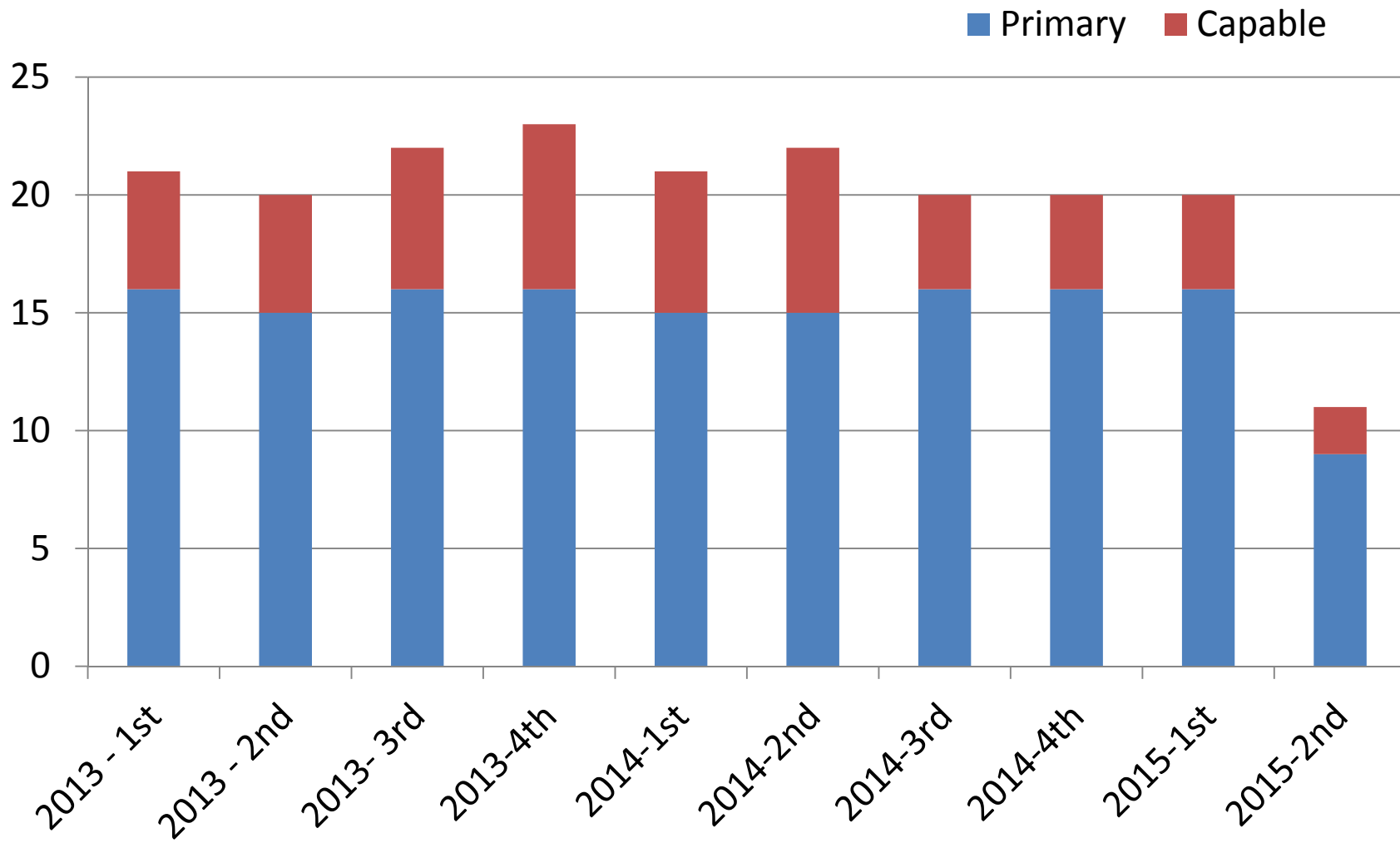




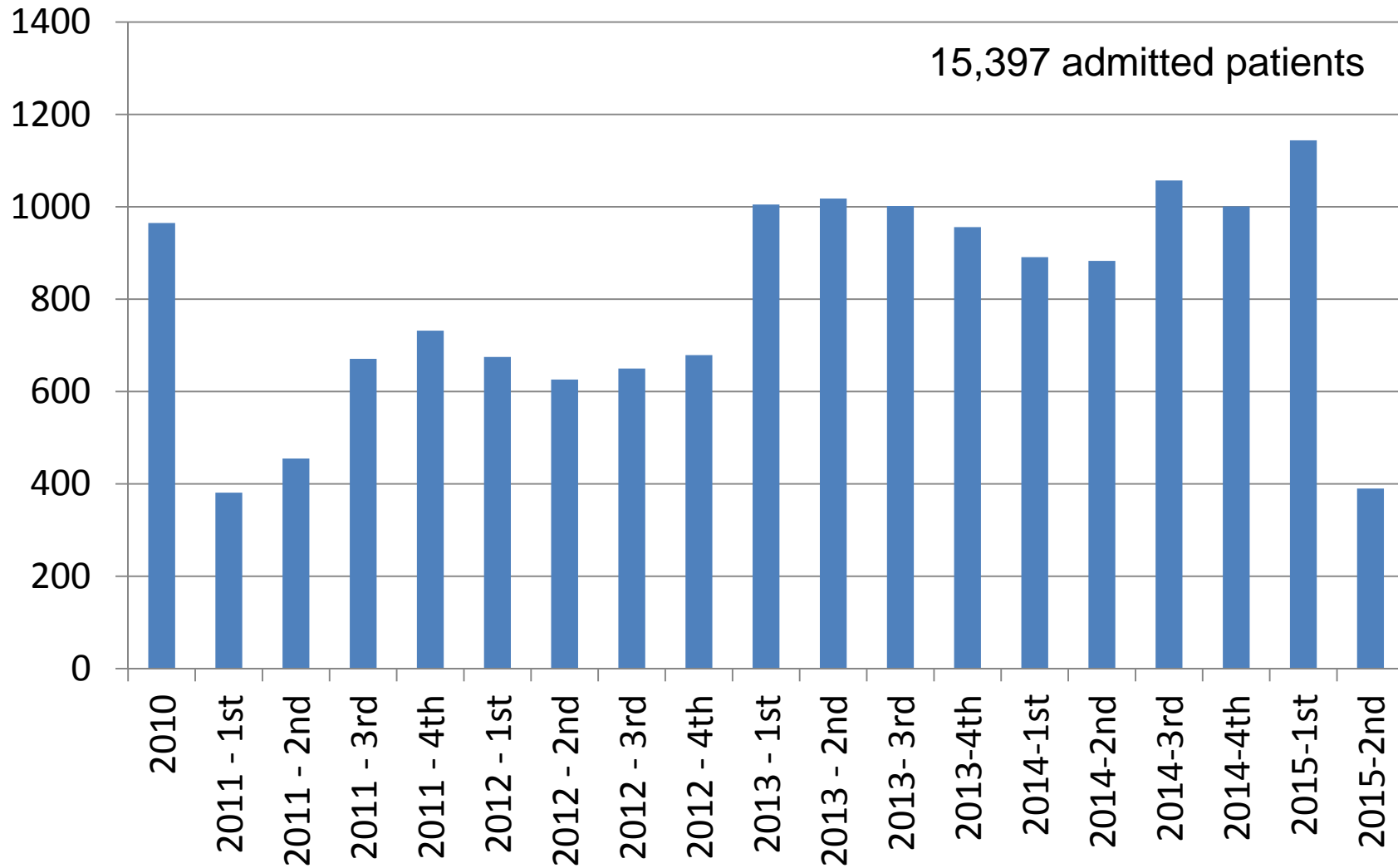
Database

- 15397 patient records
- 84% complete
- 93% admission – discharge

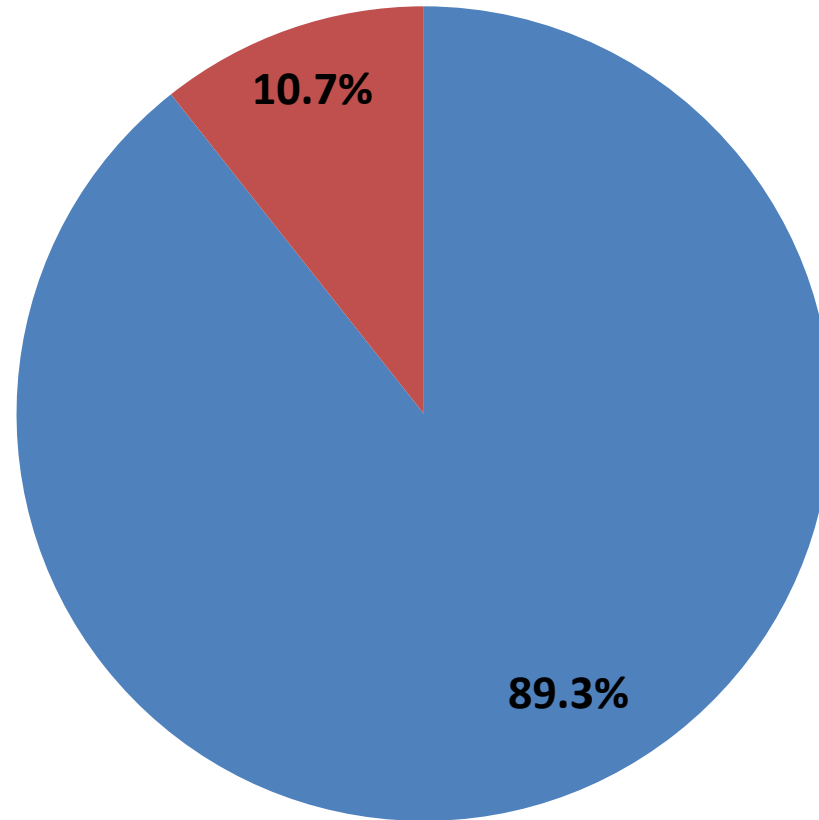
Iowa Stroke Registry Data Collection Hospitals



Iowa Stroke Registry Data Collection

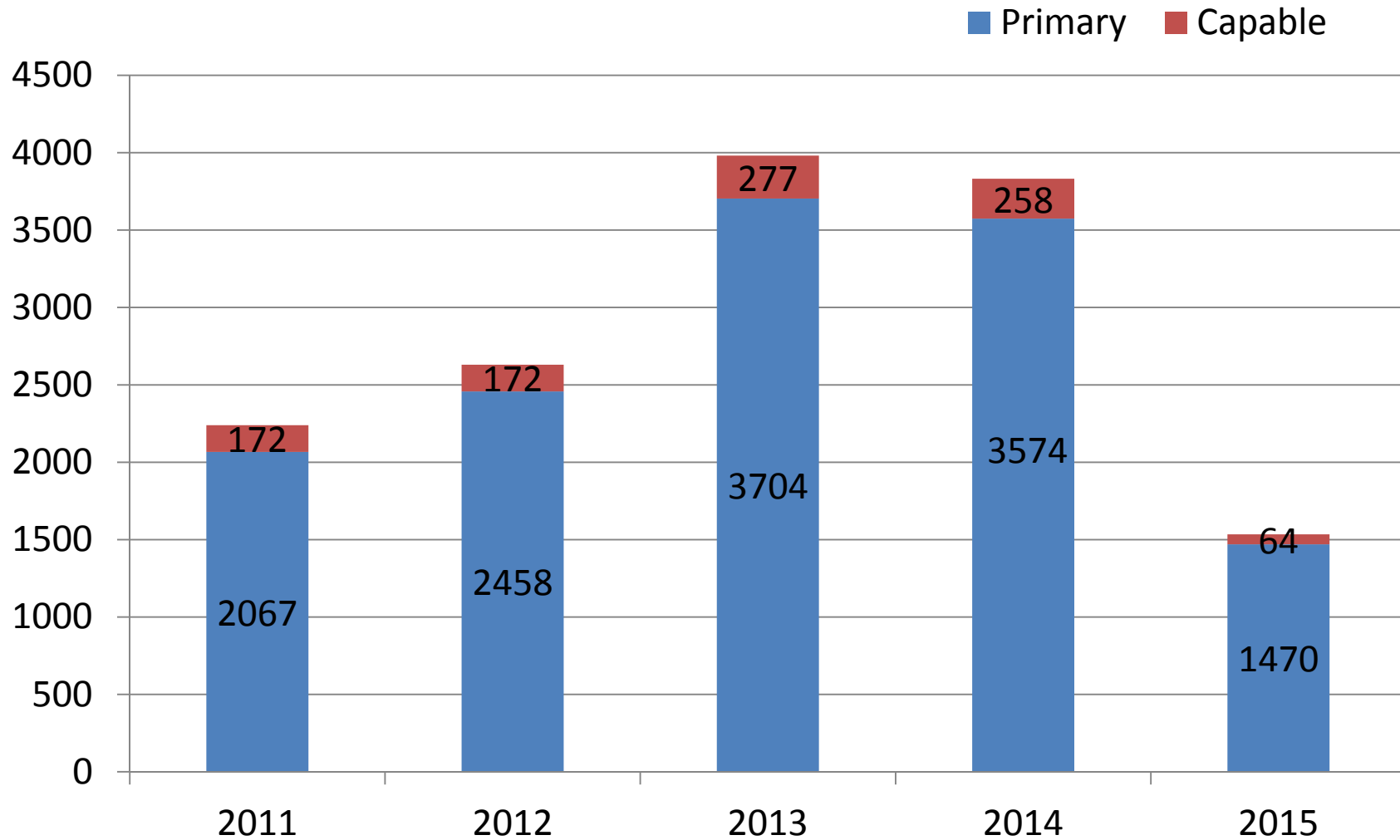


Iowa Stroke Registry Data Collection - Patients



■ Primary Stroke Center ■ Stroke Capable

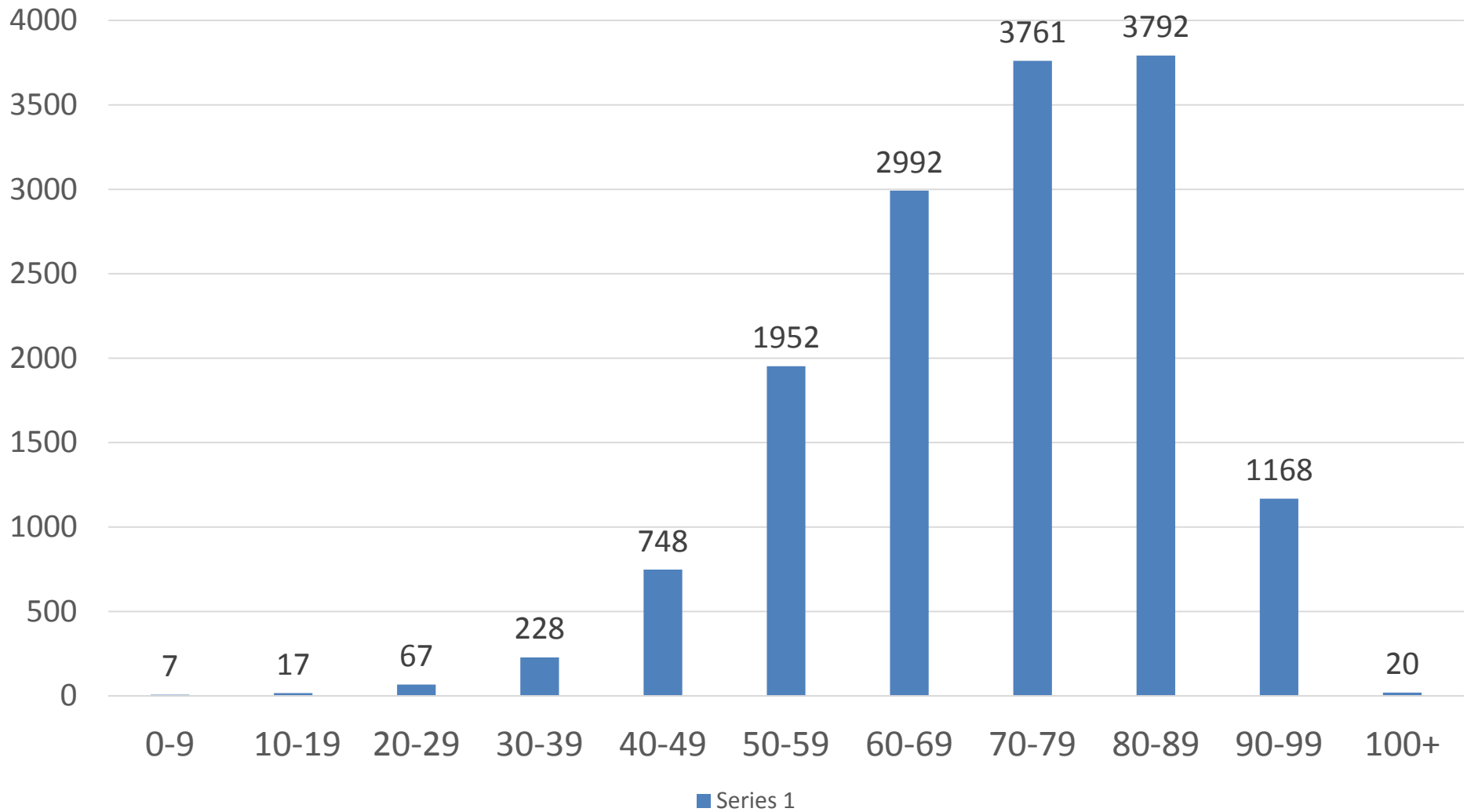
Iowa Stroke Registry Data Collection Hospitals



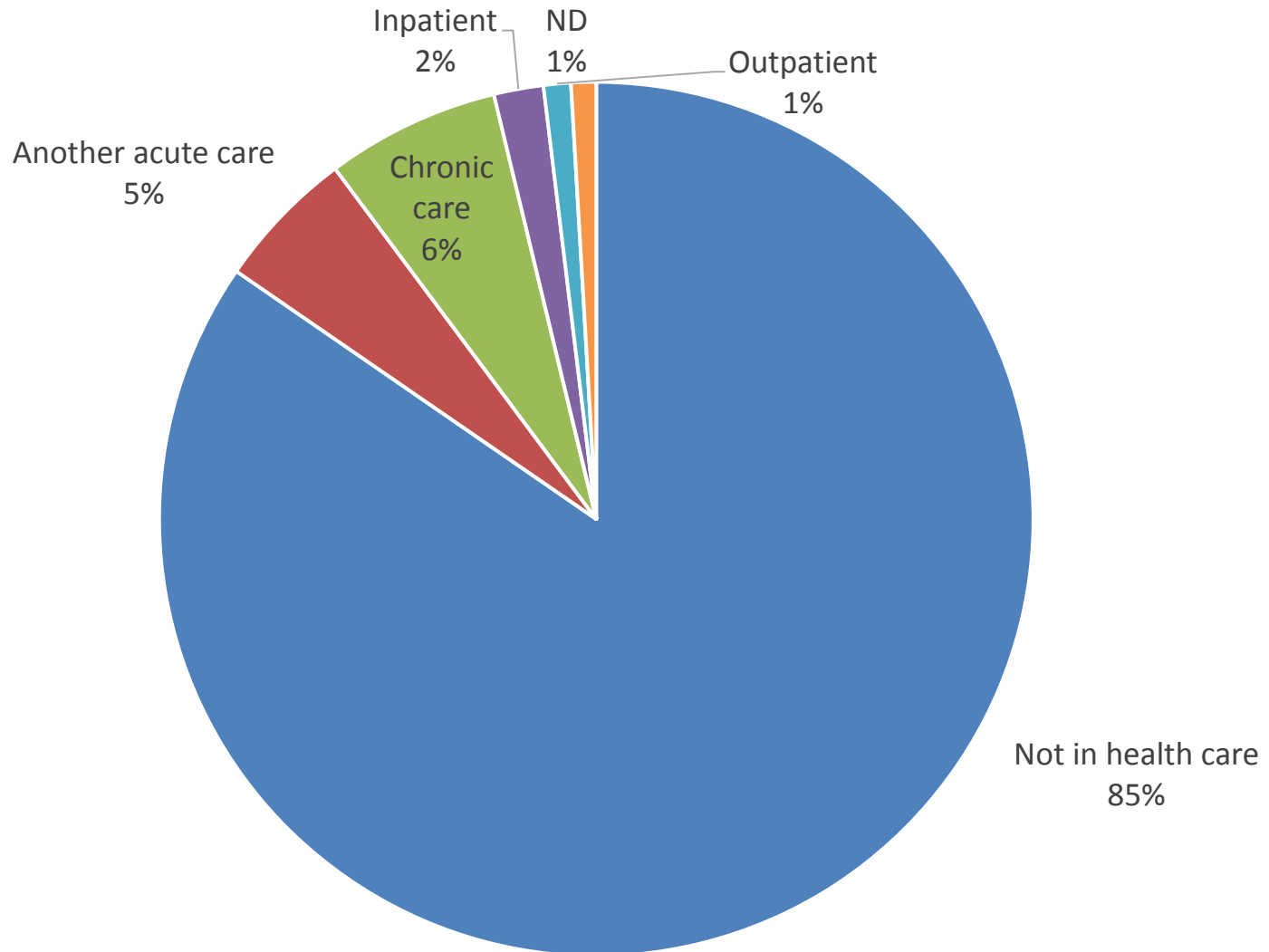
Status

- 15,397 total patients
- 14,752 demographic data
- Males 50.3%
- Females 49.6%
- Age
 - 71.5 years, 14.3 Std Dev
 - 0-103 range
- Race
 - White 94.5%
 - Hispanic 1.3%
 - Black 2.6%

Age at Stroke

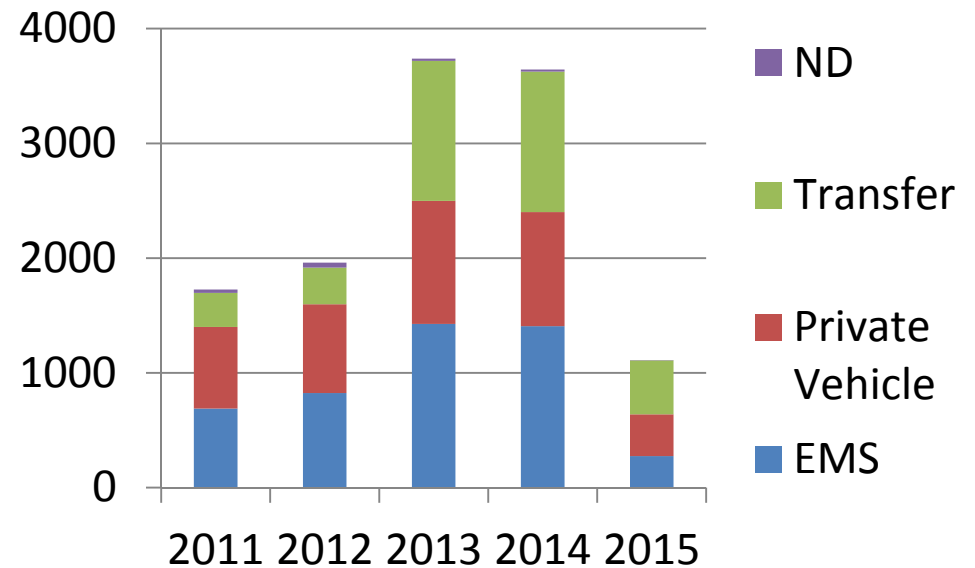
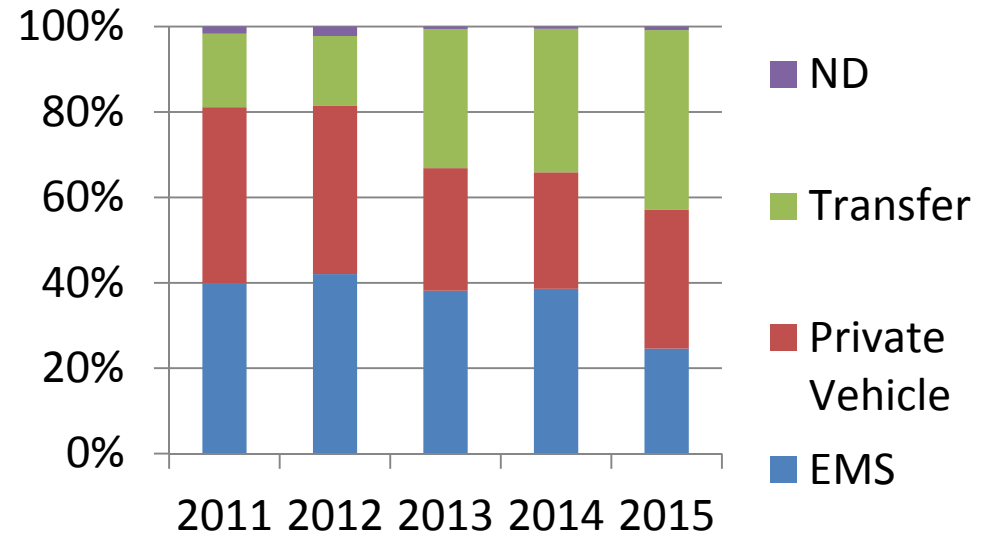


Place of Occurrence



Arrival

- EMS 38.6%
- Private Vehicle 33.3%
- Transfer 27.0%
- Not Document or Unknown 1.1%



Stroke Care Performance Indicators

	2012	2013	2014	2015
The percent of acute ischemic patients that arrived to the hospital within 120 minutes of last time seen normal	18.3%	13.7%	13.80%	13.60%
Percentage of stroke patients who show improved readiness for care at arrival	80.1%	68.0%	81.1%	77.3%
Percent of eligible patients treated with rTPA within 60 minutes of	54.8%	56.4%	56.0%	76.0%
Percent of patients screened for dysphagia	83.6%	85.4%	85.1%	87.7%
Percent of patients that received DVT prophylaxis	77.6%	88.1%	84.1%	84.5%
Percent of patients discharged on antithrombotics	98.3%	99.1%	98.3%	99.1%
Percent of patients on atrial fibrillation discharged on anticoagulants	85.0%	92.2%	94.4%	92.3%