

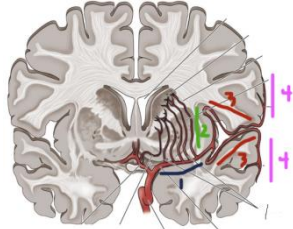
**Iowa Stroke Task Force
Meeting Minutes
May 12, 2015**

- I. Call to order at 1008
 - II. Introductions
 - III. February minutes approved
 - IV. Presentation–Jennifer Bradford–power point handout
 - a. Key point–Follow guidelines to drive practice not medication insert
 - V. Brain Alliance–see Handouts
 - VI. Coverdall Update/Recommendations
 - a. Educational Events:
 - i. Education NW event April 29th. Great event
 - ii. Webinar coming up on May 30th. 1130–1230 update on Coverdell update
 - iii. Big event on June 11–University of Nebraska Medical Center–stroke simulation event (cap at 30 people)
 - b. Coverdell contract has been submitted awaiting acceptance for next 5 years should know by June.
 - c. See handouts
 - i. Opportunities
 - 1. Door to needle within 60 minutes
 - a. EMS to HCT is causing negative times – this is good
 - 2. Anticoagulant on discharge for Afib decrease? Not sure why
 - ii. Stroke mortality going down but unable to determine what kind of stroke
 - iii. ICD–10 could cause issues due to provider confusion over information
- VII. Iowa Stroke Task Force Business
 - a. Treasure Report–Brian Helland
 - i. Balance \$2996.98
 - ii. No bill now
 - iii. 125 bill for webpage
 - iv. Dues will be sent out via email.
 - v. Membership confirmation
 - b. Membership–Megan Christofferson
 - i. **Please make sure you get membership fees paid for this year. The next year starts Jan 2015.** Dues are \$50.00
 - ii. Members that have NOT attended last 4 meetings will be dropped from email list unless person notification to the membership chair, Megan Christopherson.
- VIII. Stroke Net
 - a. Need to hospital contracts from two hospitals yet
 - b. Some trial have started but only in larger hospital
 - c. Thank you to all hospital participating
 - d. Pharmacological trial coming
 - e. Hopefully will be getting studies started by next year
- IX. Stroke Coordinator Consortium update–Erin and Jen

- a. New Officers for ISCC
 - i. Jen Westendorf–President
 - ii. Nicole –Vice President
 - iii. Jackie Smith–Secretary
 - iv. Jen Thoe–Treasurer
 - b. Possible making one meeting date for ISCC and ISTF this will start as of August 11th.
 - i. Stroke Coordinators meeting will be 1000–1200
 - ii. Iowa Stroke Task Force Meeting will be 1230–1530
- X. Confusion of SW Iowa Stroke Task Force
- a. SW? about Stroke Network
 - b. Teri Hamm will contact them regarding concerns
 - i. Coverdell grant

XI. Transfer for patient with intervention–see handout–Dr Adams

- a. Who qualifies?
 - i. Cortical impairments plus hemiparesis time sensitive less than 6 hours
 - 1. These are M1 and M2 occlusions. (I added picture to help)



2.

- ii. Basilar Occlusion– No time frame
 - iii. Patients who cannot get IV rt-PA (eg. anticoagulant past 3.5 hours)
- b. What Can be done prior to transfer
 - i. HCT–give iv rt-PA if appropriate
 - ii. Depending on hospital
 - 1. Peripheral IV access 18 gauge catheter. (20 gauge Diffusic can be used)
 - 2. CTA, if immediately available–to see if artery occlusion– CTP-ASPECT score
 - 3. Stat transfer to CSC or PSC with interventional expertise
 - c. TJC new time parameters are coming.
 - i. IV rt-PA given in less than 45 minutes
 - ii. IA/MER needs to have first pass within 90 minutes recanalizations

XII. Breakout sessions

- a. EMS Education Group –Brian Hellend
 - i. Coverdell Learning Community
 - ii. Date to go talk to Pocahontas Hospital about becoming a Stroke Capable
 - iii. EMS will be taking responsible for EMS stroke alert forms
 - iv. Hosting a stroke conference for EMS and hospital
 - v. Brian and Steve to arrange meeting with Rebecca Curtis EMS Director at IDPH
- b. Webpage Group–Pat Oser
 - i. Insert vision, mission, and bylaws access on webpage
 - ii. Do we want to add membership list.
 - iii. Enter Brain Injury alliance link.
 - iv. Stroke Coordinator group has been developed–need to speak with Jen to see if we want it to be password protected.

- v. Some visits to website are from Italy and Switzerland
 - vi. Send information to Pat Oser send information in PDF format.
 - c. Learning Communities -Erin Rindels
 - i. List of stroke month opportunities
 - ii. Sponsored Task Force Conference
- XIII. Nominations for Officers-Please send your nominations to Angie Overton @ angela-overton@uiowa.edu
 - a. Nominations thus far
 - i. Chair Steve Scheckel
 - ii. Co-Chair Teri Hamm
 - iii. Secretary Angie Overton
 - iv. Treasurer Brian Helland
 - v. Membership Megan Christofferson
- XIV. What's Next/Action Items
 - a. Develop a conference subgroup-May 2016

Upcoming dates and events:

International Stroke Conference February 16th -19th 2016

Speaker Presentation at the UOI

July 24, 2015 Stop a More Lecture Steve Kremer speaker-University of California Irvine. 1100

October 16, 2015 Sah's Lecture. 5 speakers scheduled 1200-1700
- XV. Adjournment at 1405

NEXT MEETINGS 1230-1530. Altoona Fire Station

1. August 11 2015 (Election for 2016-2017 Officers)
2. November 10, 2015
3. February 9, 2016
4. May 10, 2016
5. August 9, 2016
6. November 8, 2016

ICD-9 to ICD-10 cross walk

OP Table 8.0 Ischemic and Hemorrhagic Stroke

ICD-9 CODE	ICD-9 DESCRIPTION	ICD-10 CODE	ICD-10 DESCRIPTION
430	SUBARACHNOID HEMORRHAGE	I6000	Nontraumatic subarachnoid hemorrhage from unspecified carotid siphon and bifurcation
430	SUBARACHNOID HEMORRHAGE	I6001	Nontraumatic subarachnoid hemorrhage from right carotid siphon and bifurcation
430	SUBARACHNOID HEMORRHAGE	I6002	Nontraumatic subarachnoid hemorrhage from left carotid siphon and bifurcation
430	SUBARACHNOID HEMORRHAGE	I6010	Nontraumatic subarachnoid hemorrhage from unspecified middle cerebral artery
430	SUBARACHNOID HEMORRHAGE	I6011	Nontraumatic subarachnoid hemorrhage from right middle cerebral artery
430	SUBARACHNOID HEMORRHAGE	I6012	Nontraumatic subarachnoid hemorrhage from left middle cerebral artery
430	SUBARACHNOID HEMORRHAGE	I6020	Nontraumatic subarachnoid hemorrhage from unspecified anterior communicating artery

OP Table 8.0 Ischemic and Hemorrhagic Stroke (continued)

ICD-9 CODE	ICD-9 DESCRIPTION	ICD-10 CODE	ICD-10 DESCRIPTION
430	SUBARACHNOID HEMORRHAGE	I6021	Nontraumatic subarachnoid hemorrhage from right anterior communicating artery
430	SUBARACHNOID HEMORRHAGE	I6022	Nontraumatic subarachnoid hemorrhage from left anterior communicating artery
430	SUBARACHNOID HEMORRHAGE	I6030	Nontraumatic subarachnoid hemorrhage from unspecified posterior communicating artery
430	SUBARACHNOID HEMORRHAGE	I6031	Nontraumatic subarachnoid hemorrhage from right posterior communicating artery
430	SUBARACHNOID HEMORRHAGE	I6032	Nontraumatic subarachnoid hemorrhage from left posterior communicating artery
430	SUBARACHNOID HEMORRHAGE	I604	Nontraumatic subarachnoid hemorrhage from basilar artery
430	SUBARACHNOID HEMORRHAGE	I6050	Nontraumatic subarachnoid hemorrhage from unspecified vertebral artery
430	SUBARACHNOID HEMORRHAGE	I6051	Nontraumatic subarachnoid hemorrhage from right vertebral artery
430	SUBARACHNOID HEMORRHAGE	I6052	Nontraumatic subarachnoid hemorrhage from left vertebral artery
430	SUBARACHNOID HEMORRHAGE	I606	Nontraumatic subarachnoid hemorrhage from other intracranial arteries
430	SUBARACHNOID HEMORRHAGE	I607	Nontraumatic subarachnoid hemorrhage from unspecified intracranial artery
430	SUBARACHNOID HEMORRHAGE	I608	Other nontraumatic subarachnoid hemorrhage
430	SUBARACHNOID HEMORRHAGE	I609	Nontraumatic subarachnoid hemorrhage, unspecified
431	INTRACEREBRAL HEMORRHAGE	I610	Nontraumatic intracerebral hemorrhage in hemisphere, subcortical

OP Table 8.0 Ischemic and Hemorrhagic Stroke (continued)

ICD-9 CODE	ICD-9 DESCRIPTION	ICD-10 CODE	ICD-10 DESCRIPTION
431	INTRACEREBRAL HEMORRHAGE	I611	Nontraumatic intracerebral hemorrhage in hemisphere, cortical
431	INTRACEREBRAL HEMORRHAGE	I612	Nontraumatic intracerebral hemorrhage in hemisphere, unspecified
431	INTRACEREBRAL HEMORRHAGE	I613	Nontraumatic intracerebral hemorrhage in brain stem
431	INTRACEREBRAL HEMORRHAGE	I614	Nontraumatic intracerebral hemorrhage in cerebellum
431	INTRACEREBRAL HEMORRHAGE	I615	Nontraumatic intracerebral hemorrhage, intraventricular
431	INTRACEREBRAL HEMORRHAGE	I616	Nontraumatic intracerebral hemorrhage, multiple localized
431	INTRACEREBRAL HEMORRHAGE	I618	Other nontraumatic intracerebral hemorrhage
431	INTRACEREBRAL HEMORRHAGE	I619	Nontraumatic intracerebral hemorrhage, unspecified
432.9	INTRACRANIAL HEMORR NOS	I629	Nontraumatic intracranial hemorrhage, unspecified
433.01	OCL BSLR ART W INFRCT	I63.02	Cerebral infarction due to thrombosis of basilar artery
433.01	OCL BSLR ART W INFRCT	I63.12	Cerebral infarction due to embolism of basilar artery
433.01	OCL BSLR ART W INFRCT	I63.22	Cerebral infarction due to unspecified occlusion or stenosis of basilar arteries
433.11	OCL CRTD ART W INFRCT	I63.031	Cerebral infarction due to thrombosis of right carotid artery
433.11	OCL CRTD ART W INFRCT	I63.032	Cerebral infarction due to thrombosis of left carotid artery
433.11	OCL CRTD ART W INFRCT	I63.039	Cerebral infarction due to thrombosis of unspecified carotid artery

OP Table 8.0 Ischemic and Hemorrhagic Stroke (continued)

ICD-9 CODE	ICD-9 DESCRIPTION	ICD-10 CODE	ICD-10 DESCRIPTION
433.11	OCL CRTD ART W INFRCT	I63.131	Cerebral infarction due to embolism of right carotid artery
433.11	OCL CRTD ART W INFRCT	I63.132	Cerebral infarction due to embolism of left carotid artery
433.11	OCL CRTD ART W INFRCT	I63.139	Cerebral infarction due to embolism of unspecified carotid artery
433.11	OCL CRTD ART W INFRCT	I63.231	Cerebral infarction due to unspecified occlusion or stenosis of right carotid arteries
433.11	OCL CRTD ART W INFRCT	I63.232	Cerebral infarction due to unspecified occlusion or stenosis of left carotid arteries
433.11	OCL CRTD ART W INFRCT	I63.239	Cerebral infarction due to unspecified occlusion or stenosis of unspecified carotid arteries
433.21	OCL VRTB ART W INFRCT	I63.011	Cerebral infarction due to thrombosis of right vertebral artery
433.21	OCL VRTB ART W INFRCT	I63.012	Cerebral infarction due to thrombosis of left vertebral artery
433.21	OCL VRTB ART W INFRCT	I63.019	Cerebral infarction due to thrombosis of unspecified vertebral artery
433.21	OCL VRTB ART W INFRCT	I63.111	Cerebral infarction due to embolism of right vertebral artery
433.21	OCL VRTB ART W INFRCT	I63.112	Cerebral infarction due to embolism of left vertebral artery
433.21	OCL VRTB ART W INFRCT	I63.119	Cerebral infarction due to embolism of unspecified vertebral artery
433.21	OCL VRTB ART W INFRCT	I63.211	Cerebral infarction due to unspecified occlusion or stenosis of right vertebral arteries

OP Table 8.0 Ischemic and Hemorrhagic Stroke (continued)

ICD-9 CODE	ICD-9 DESCRIPTION	ICD-10 CODE	ICD-10 DESCRIPTION
433.21	OCL VRTB ART W INFRCT	I63.212	Cerebral infarction due to unspecified occlusion or stenosis of left vertebral arteries
433.21	OCL VRTB ART W INFRCT	I63.219	Cerebral infarction due to unspecified occlusion or stenosis of unspecified vertebral arteries
433.31	OCL MLT BI ART W INFRCT	I63.59	Cerebral infarction due to unspecified occlusion or stenosis of other cerebral artery
433.81	OCL SPCF ART W INFRCT	I63.09	Cerebral infarction due to thrombosis of other precerebral artery
433.81	OCL SPCF ART W INFRCT	I63.19	Cerebral infarction due to embolism of other precerebral artery
433.81	OCL SPCF ART W INFRCT	I63.59	Cerebral infarction due to unspecified occlusion or stenosis of other cerebral artery
433.91	OCL ART NOS W INFRCT	I63.00	Cerebral infarction due to thrombosis of unspecified precerebral artery
433.91	OCL ART NOS W INFRCT	I63.10	Cerebral infarction due to embolism of unspecified precerebral artery
433.91	OCL ART NOS W INFRCT	I63.20	Cerebral infarction due to unspecified occlusion or stenosis of unspecified precerebral arteries
433.91	OCL ART NOS W INFRCT	I63.29	Cerebral infarction due to unspecified occlusion or stenosis of other precerebral arteries
434.01	CRBL THRMBS W INFRCT	I63.30	Cerebral infarction due to thrombosis of unspecified cerebral artery
434.01	CRBL THRMBS W INFRCT	I63.311	Cerebral infarction due to thrombosis of right middle cerebral artery

OP Table 8.0 Ischemic and Hemorrhagic Stroke (continued)

ICD-9 CODE	ICD-9 DESCRIPTION	ICD-10 CODE	ICD-10 DESCRIPTION
434.01	CRBL THRMBS W INFRCT	I63.312	Cerebral infarction due to thrombosis of left middle cerebral artery
434.01	CRBL THRMBS W INFRCT	I63.319	Cerebral infarction due to thrombosis of unspecified middle cerebral artery
434.01	CRBL THRMBS W INFRCT	I63.321	Cerebral infarction due to thrombosis of right anterior cerebral artery
434.01	CRBL THRMBS W INFRCT	I63.322	Cerebral infarction due to thrombosis of left anterior cerebral artery
434.01	CRBL THRMBS W INFRCT	I63.329	Cerebral infarction due to thrombosis of unspecified anterior cerebral artery
434.01	CRBL THRMBS W INFRCT	I63.331	Cerebral infarction due to thrombosis of right posterior cerebral artery
434.01	CRBL THRMBS W INFRCT	I63.332	Cerebral infarction due to thrombosis of left posterior cerebral artery
434.01	CRBL THRMBS W INFRCT	I63.339	Cerebral infarction due to thrombosis of unspecified posterior cerebral artery
434.01	CRBL THRMBS W INFRCT	I63.341	Cerebral infarction due to thrombosis of right cerebellar artery
434.01	CRBL THRMBS W INFRCT	I63.342	Cerebral infarction due to thrombosis of left cerebellar artery
434.01	CRBL THRMBS W INFRCT	I63.349	Cerebral infarction due to thrombosis of unspecified cerebellar artery
434.01	CRBL THRMBS W INFRCT	I63.39	Cerebral infarction due to thrombosis of other cerebral artery
434.01	CRBL THRMBS W INFRCT	I63.6	Cerebral infarction due to cerebral venous thrombosis, nonpyogenic
434.11	CRBL EMBLSM W INFRCT	I63.40	Cerebral infarction due to embolism of unspecified cerebral artery
434.11	CRBL EMBLSM W INFRCT	I63.411	Cerebral infarction due to embolism of right middle cerebral artery

OP Table 8.0 Ischemic and Hemorrhagic Stroke (continued)

ICD-9 CODE	ICD-9 DESCRIPTION	ICD-10 CODE	ICD-10 DESCRIPTION
434.11	CRBL EMBLSM W INFRCT	I63.412	Cerebral infarction due to embolism of left middle cerebral artery
434.11	CRBL EMBLSM W INFRCT	I63.419	Cerebral infarction due to embolism of unspecified middle cerebral artery
434.11	CRBL EMBLSM W INFRCT	I63.421	Cerebral infarction due to embolism of right anterior cerebral artery
434.11	CRBL EMBLSM W INFRCT	I63.422	Cerebral infarction due to embolism of left anterior cerebral artery
434.11	CRBL EMBLSM W INFRCT	I63.429	Cerebral infarction due to embolism of unspecified anterior cerebral artery
434.11	CRBL EMBLSM W INFRCT	I63.431	Cerebral infarction due to embolism of right posterior cerebral artery
434.11	CRBL EMBLSM W INFRCT	I63.432	Cerebral infarction due to embolism of left posterior cerebral artery
434.11	CRBL EMBLSM W INFRCT	I63.439	Cerebral infarction due to embolism of unspecified posterior cerebral artery
434.11	CRBL EMBLSM W INFRCT	I63.441	Cerebral infarction due to embolism of right cerebellar artery
434.11	CRBL EMBLSM W INFRCT	I63.442	Cerebral infarction due to embolism of left cerebellar artery
434.11	CRBL EMBLSM W INFRCT	I63.449	Cerebral infarction due to embolism of unspecified cerebellar artery
434.91	CRBL ART OCL NOS W INFRCT	I63.50	Cerebral infarction due to unspecified occlusion or stenosis of unspecified cerebral artery
434.91	CRBL ART OCL NOS W INFRCT	I63.511	Cerebral infarction due to unspecified occlusion or stenosis of right middle cerebral artery

OP Table 8.0 Ischemic and Hemorrhagic Stroke (continued)

ICD-9 CODE	ICD-9 DESCRIPTION	ICD-10 CODE	ICD-10 DESCRIPTION
434.91	CRBL ART OCL NOS W INFR	I63.512	Cerebral infarction due to unspecified occlusion or stenosis of left middle cerebral artery
434.91	CRBL ART OCL NOS W INFR	I63.519	Cerebral infarction due to unspecified occlusion or stenosis of unspecified middle cerebral artery
434.91	CRBL ART OCL NOS W INFR	I63.521	Cerebral infarction due to unspecified occlusion or stenosis of right anterior cerebral artery
434.91	CRBL ART OCL NOS W INFR	I63.522	Cerebral infarction due to unspecified occlusion or stenosis of left anterior cerebral artery
434.91	CRBL ART OCL NOS W INFR	I63.529	Cerebral infarction due to unspecified occlusion or stenosis of unspecified anterior cerebral artery
434.91	CRBL ART OCL NOS W INFR	I63.531	Cerebral infarction due to unspecified occlusion or stenosis of right posterior cerebral artery
434.91	CRBL ART OCL NOS W INFR	I63.532	Cerebral infarction due to unspecified occlusion or stenosis of left posterior cerebral artery
434.91	CRBL ART OCL NOS W INFR	I63.539	Cerebral infarction due to unspecified occlusion or stenosis of unspecified posterior cerebral artery
434.91	CRBL ART OCL NOS W INFR	I63.541	Cerebral infarction due to unspecified occlusion or stenosis of right cerebellar artery
434.91	CRBL ART OCL NOS W INFR	I63.542	Cerebral infarction due to unspecified occlusion or stenosis of left cerebellar artery

OP Table 8.0 Ischemic and Hemorrhagic Stroke (continued)

ICD-9 CODE	ICD-9 DESCRIPTION	ICD-10 CODE	ICD-10 DESCRIPTION
434.91	CRBL ART OCL NOS W INFR	I63.549	Cerebral infarction due to unspecified occlusion or stenosis of unspecified cerebellar artery
434.91	CRBL ART OCL NOS W INFR	I63.59	Cerebral infarction due to unspecified occlusion or stenosis of other cerebral artery
434.91	CRBL ART OCL NOS W INFR	I63.8	Other cerebral infarction
434.91	CRBL ART OCL NOS W INFR	I63.9	Cerebral infarction, unspecified
436	CVA	I67.89	Other cerebrovascular disease